

LED MILAN Downlight 30W

Warm White / Natural White

\$ ECONOMIC

Uses only 30W; less than a Halogen downlight.

FIXED GIMBAL

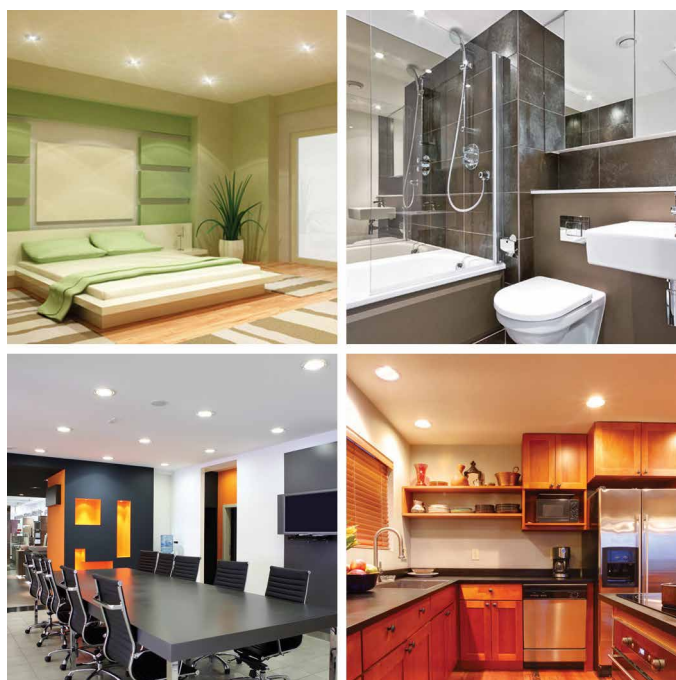
The fixed gimbal fitting ensures a consistent look when installed.

OPAQUE COVER

Opaque cover reduces glare and helps to spread light evenly.

LESS HEAT

LED lights produce a fraction of the heat emissions of halogen downlights and are much safer.



SPECIFICATIONS

Power	30W
Driver	Dimmable
Light Source	Epistar™
Light Colour	Natural White [5000K] / Warm White [3000K]
Input Voltage	220-240V 50Hz
Luminous Flux	2300Lm [NW] / 2100Lm [WW]
Cut-out	195mm
Diameter of Face	238mm
Beam Angle	120°
Life Span	50,000 Hours [7 Year Warranty]
Operation Temp	-20° to + 50C°
Surface Colour	White with silver rim
Connections	Includes Driver, Flex and Plug